



MAHATMA GANDHI INSTITUTE OF MEDICAL SCIENCES, SEVAGRAM

GENERAL CAMPUS FACILITIES AND AMBIENCE

GREEN CAMPUS

- MGIMS encourages tree plantation activity and has ample green cover. Approximately, 22,000 trees have been planted – both commercial as well as non-commercial in addition to the existing approximately 10,000 trees.





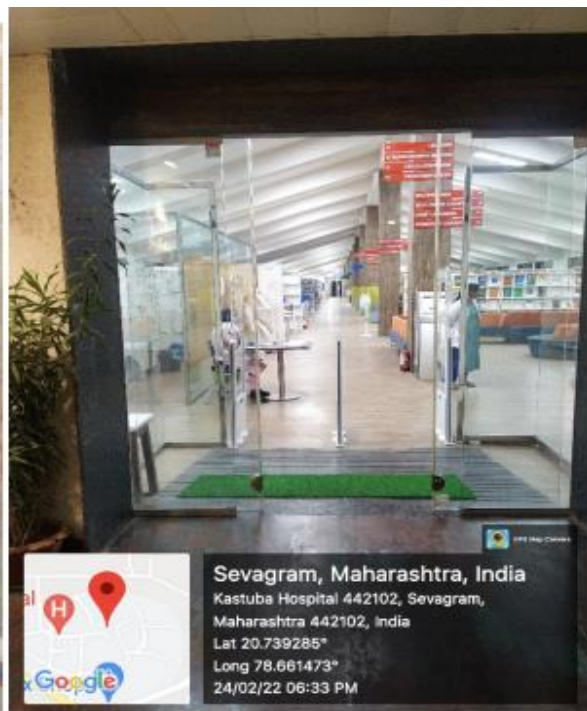
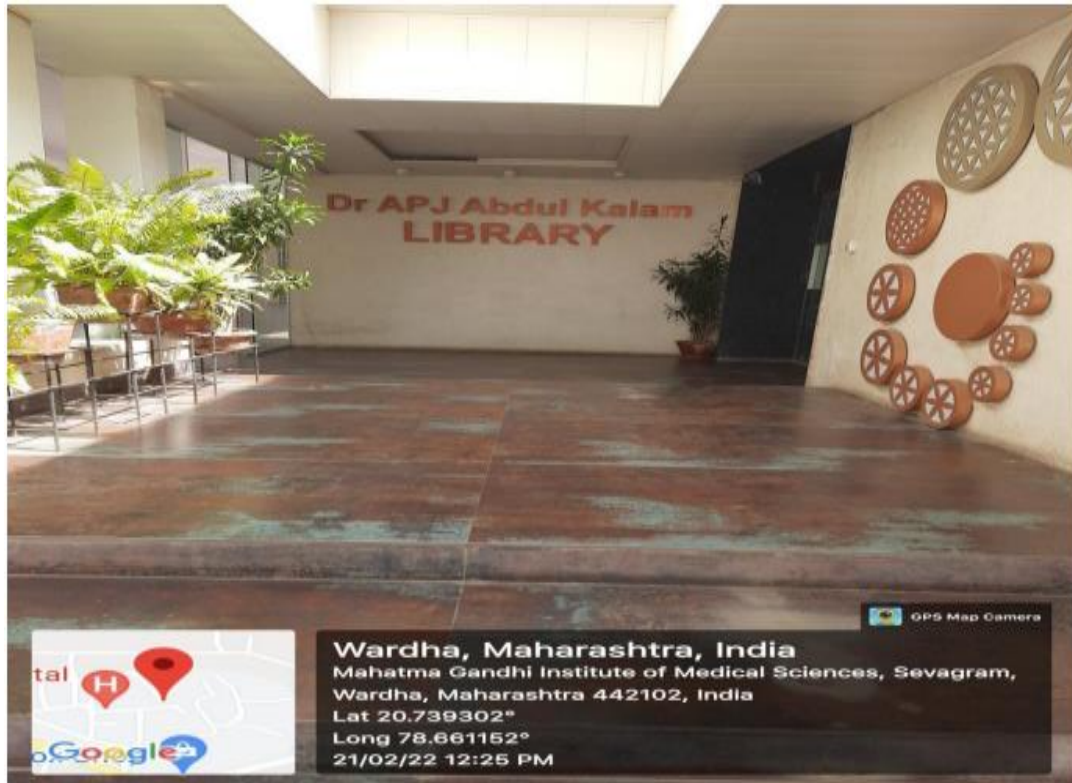


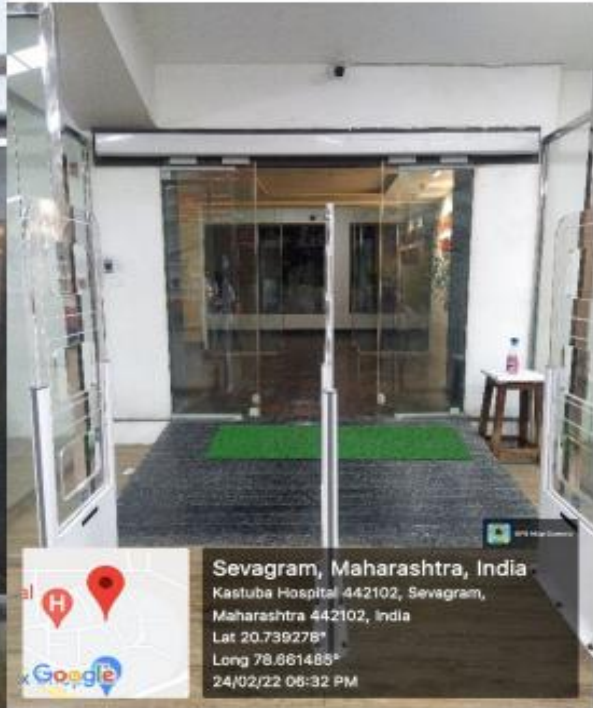
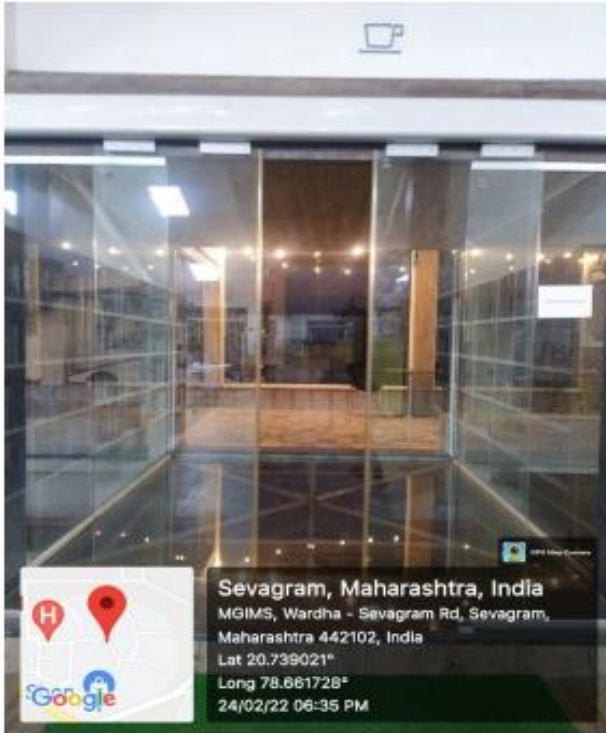


AMBIENCE

The entire ambience of the campus is conducive to reflection and learning. The ambience of the library with its spacious interiors is enjoyed by students who learn. The entire campus has wi-fi access.





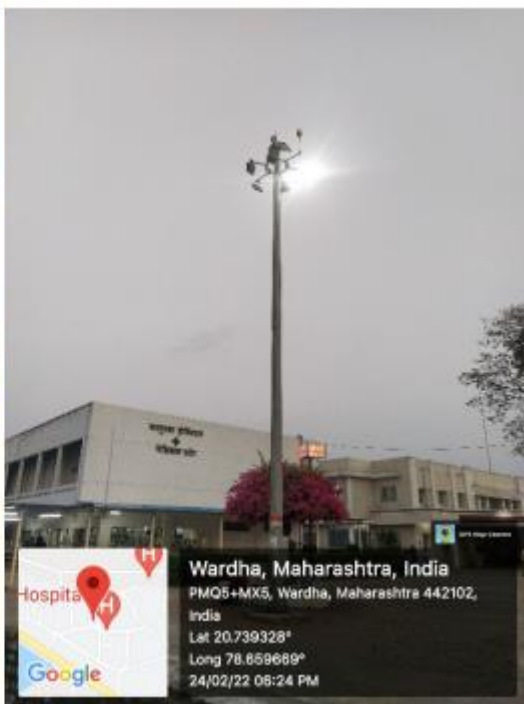


ENVIRONMENT-FRIENDLY MEASURES

- As part of its steps to become environment friendly, MGIMS has installed solar water heaters in all the hostels in order to save energy.
- Solar panels have also been installed in residents' hostels, and also in the KHS peripheral training centres at Anji and Bhidi.







HOSTELS

Boys' hostel

- Number of hostels: One (Jawaharlal Nehru Boys Hostel)- seven blocks
- Number of inmates: 242 undergraduates, 48 interns, 49 postgraduates
- Facilities: The hostel has seven blocks with 389 rooms

Each block has the following facilities:

- The rooms are single seated and have an inbuilt cupboard and are provided with hard furniture
- Each block has a wi-fi facility and a central play area.
- There is a water cooler along with water purifier in each block
- Washing machine
- Solar water heater of 2000 L capacity in each block.

Common Facilities for all boys:

- Well-equipped gymnasium
- Modern dining hall with a capacity for 100 at a time
- Modern kitchen
- Indoor games facility: table tennis etc
- Outdoor courts: volleyball court, cricket ground, badminton court
- Cafeteria

Two well-furnished guest rooms with attached toilets are available for stay of parents/ family members of the inmates

Girls' hostel

- Number of hostels: One (Jawaharlal Nehru Girls Hostel)- seven blocks
- Number of inmates: 157 undergraduates, 53 interns, 66 postgraduates
- Facilities

Each block has the following facilities:

- The rooms are single seated and have an inbuilt cupboard and are provided with hard furniture
- Each block has a wi-fi facility and a central play area.
- There is a water cooler along with a water purifier in each block.
- Solar water heater of 2000 L capacity in each block.

Common Facilities for all girls

- Well-equipped gymnasium
- Modern dining hall with a capacity for 100 at a time with television
- Modern kitchen
- Two coffee machines
- Indoor games facility: table tennis
- Outdoor courts: badminton court, volleyball court

- Cafeteria
- One well-furnished guest room with attached toilet is available for stay of exchange students

Hostel for interns

- Number of hostels: The JN Boys Hostel and JN Girls Hostel have one block each (50 rooms) allotted to interns.
- Number of inmates: 48 male interns, 53 female interns
- Facilities: Same as above

PG Hostel

- Number of hostels: There is one married PG hostel with 36 rooms.
- In addition, the JN Boys Hostel has one block (50 rooms) allotted to postgraduate male students while the JN Girls hostel has two blocks allotted to postgraduate female students.
- Number of inmates: 36 postgraduates in married PG hostel with families. 49 postgraduates in JN Boys Hostel; 66 postgraduates in JN Girls Hostel

Facilities:

- In the married postgraduate hostel, the inmates have two rooms with a kitchen and attached toilet. Cupboard and hard furniture are provided.

CANTEEN

The Institute has three canteens. One is located near the canteen. The other is located near the OPD and caters to needs of doctors and patients. The Mahila Mandal located near the wards is a women-run-canteen serving and catering the culinary needs of most undergraduates, interns and post graduates.

TOILETS

The Institute has an adequate number of toilets for patients and their relatives. The total number of toilets in the Institute are 390.

POST-OFFICE

The Sevagram post-office is located 800 m from the campus

BANK

The Central Bank of India and the State Bank of India branches are located 500 m from college. There are ATMs available on campus for the patients, faculty and students.

SEWAGE TREATMENT PLANT

In MGIMS, sewage water collection and disposal facility is properly designed with underground sewage drainage line, chambers, septic tanks, soakage pits followed by sewage treatment plant. The underground sewerage system is connected with all sewage generating areas like Wards of Hospital, Hostel Campus, Residential Campus and Offices etc. All sewage water is treated in the Sewage Treatment Plant based on MBBR technology which is situated far away from the habitation. After the proper treatment sewage water is used for the Agriculture purpose. Physical and chemical analysis of treated water is done on a regular basis.

